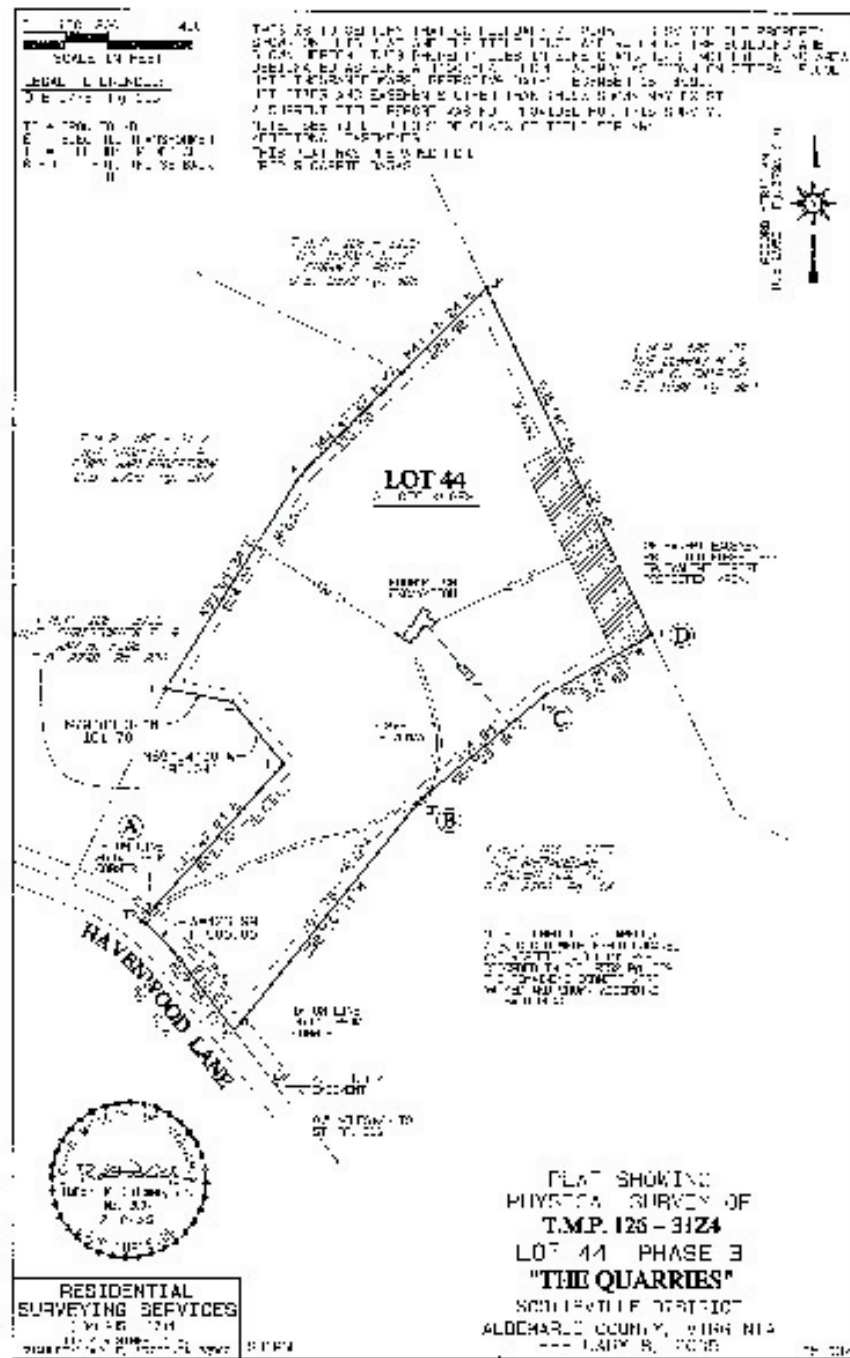


Natural privacy on  
21 acres in The  
Quarries in southern  
Albemarle County



# welcome to...



5310 Havenwood Lane

PA©E

PACE REAL ESTATE ASSOCIATES LLC



contact agent [martha deJarnete](#) | 434/981.3957 | [martha@pace-homes.com](#)  
marketed by PACE real estate associates, LLC | 817.PACE | [www.pace-homes.com](#)



# pace 5310 havenwoodlane



## indoor pool & spa

Architect designed and built with green materials and sensitivity to the site, this one level home is dramatic yet practical and liveable. Materials include maple cabinets and oak supports milled from trees on the site as well as soapstone countertops and

salvaged stone. Native landscaping blends with the natural landscape for low maintenance and privacy. A home equipped with every modern convenience including an indoor pool/spa. See more Basas photos at [www.sunbiosis.com](http://www.sunbiosis.com)

Offered at \$569,000 mls# 448262

**directions** | 29 to route 6 (Irish Rd) to right onto 800 (Schuyler Rd) to right on Havenwood--house on right "Basas" on the mailbox